

# JET

**701**

**WOODWORKING MORTISER**

**1791310M**

**230/50/1**

## PARTS LIST

**Walter Meier (Fertigung) AG**

Bahnstrasse 24

8603 Schwerzenbach

Switzerland

Phone +41 44 806 47 48

Fax +41 44 806 47 58

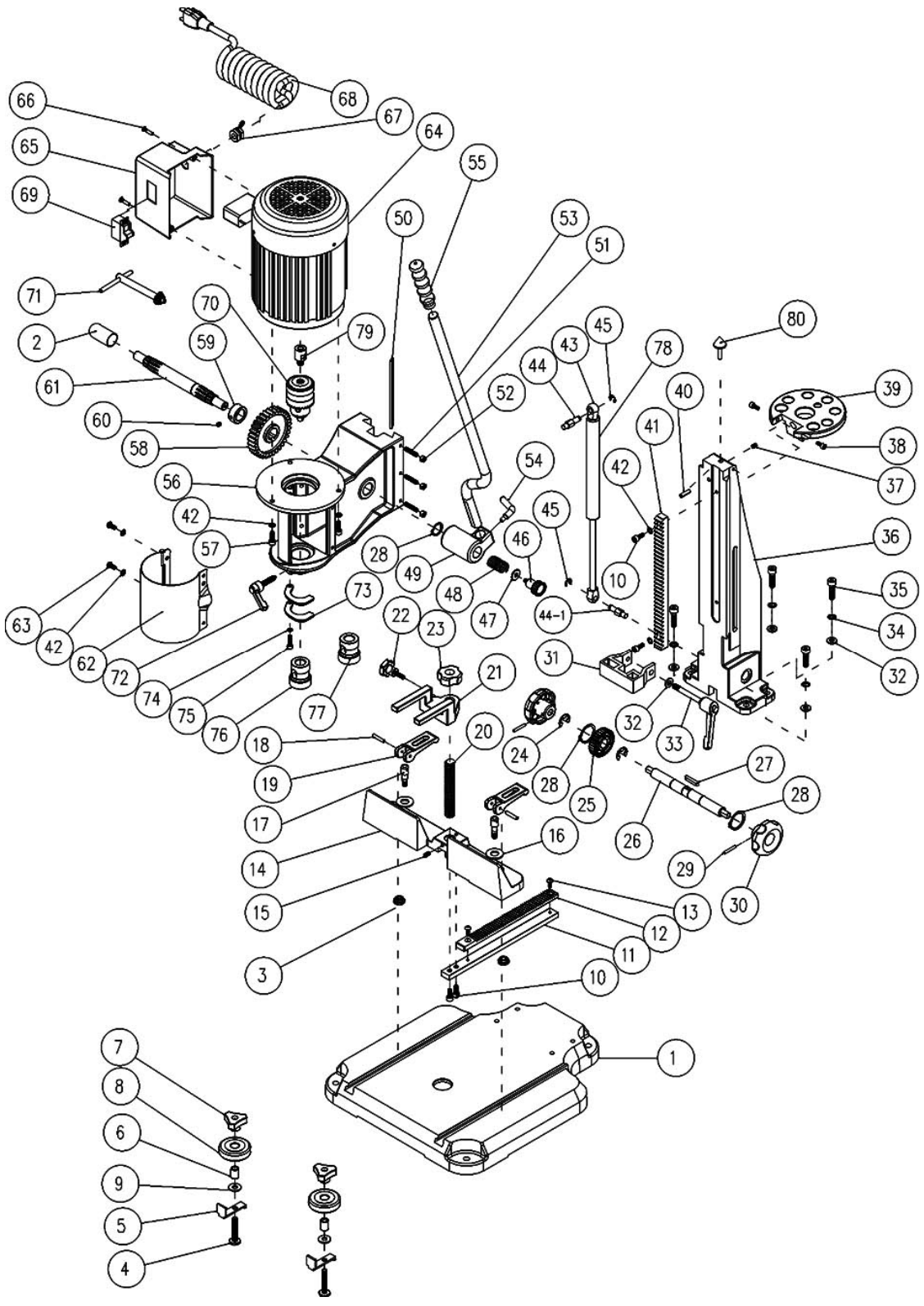
[jetinfo.eu@waltermeier.com](mailto:jetinfo.eu@waltermeier.com)

[www.jettools.com](http://www.jettools.com)



P-1791310M 2009/08/28

# 701 Mortiser Assembly



## Parts List for the 701 Benchtop Mortiser

Index No.	Part No.	Description	Size	Qty
1.....	701-101.....	Base.....		1
2.....	701-102.....	Shaft Cap.....		1
3.....	701-103.....	T- Nut.....		2
4.....	701-104.....	Hex Cap Screw (Special).....		2
5.....	701-105.....	Slide Plate.....		2
6.....	701-106.....	Bushing.....		2
7.....	701-107.....	Knob.....		2
8.....	701-108.....	Roller.....		2
9.....	TS-1550061.....	Flat Washer.....	M8.....	2
10.....	TS-1503041.....	Socket Head Cap Screw.....	M6x16.....	4
11.....	701-111.....	Bar.....		1
12.....	701-112.....	Rack.....		1
13.....	TS-2245122.....	Button Head Socket Screw.....	M5x12.....	2
14.....	701-114.....	Fence.....		1
15.....	TS-1523031.....	Set Screw.....	M6x10.....	1
16.....	TS-1550061.....	Flat Washer.....	M8.....	2
17.....	701-117.....	Bolt.....		2
18.....	701-118.....	Roll Pin.....	M4x25.....	2
19.....	701-119.....	Cam Handle.....		2
20.....	701-120.....	Post.....		1
21.....	701-121.....	Work Hold-down.....		1
22.....	701-122.....	Knob.....		1
23.....	701-123.....	Knob.....		1
24.....	701-124.....	E-Clip.....	E-12.....	2
25.....	701-125.....	Gear.....		1
26.....	701-126.....	Shaft.....		1
27.....	701-127.....	Key.....	5x5x12.....	1
28.....	701-128.....	Ext. Retaining Ring.....	S-14.....	3
29.....	701-118.....	Roll Pin.....	M4x25.....	2
30.....	701-130.....	Knob.....		2
31.....	701-131.....	Depth Stop.....		1
32.....	TS-1550061.....	Flat Washer.....	M8.....	5
33.....	701-133.....	Locking Handle.....		1
34.....	TS-1551061.....	Lock Washer.....	M8.....	4
35.....	TS-1504061.....	Socket Head Cap Screw.....	M8x30.....	4
36.....	701-136.....	Column.....		1
37.....	TS-1523021.....	Set Screw.....	M6x8.....	1
38.....	TS-1502031.....	Socket Head Cap Screw.....	M5x12.....	2
39.....	701-139.....	Tool Tray.....		1
40.....	701-140.....	Roll Pin.....	M6x20.....	1
41.....	701-141.....	Rack.....		1
42.....	TS-1551041.....	Lock Washer.....	M6.....	7
43.....	701-143.....	Cylinder Head.....		2
44.....	701-144.....	Upper Cylinder Fitting.....		1
44-1.....	701-144A.....	Lower Cylinder Fitting.....		1
45.....	701-145.....	E-Clip.....	E-7.....	2
46.....	701-146.....	Knob.....		1
47.....	TS-1550041.....	Flat Washer.....	M6.....	1

Index No.	Part No.	Description	Size	Qty
48.....	23011063.....	Spring .....		1
49.....	701-149.....	Handle Hub .....		1
50.....	701-150.....	Gib .....		1
51.....	TS-1523071.....	Set Screw.....	M6x25 .....	3
52.....	TS-1540041.....	Hex Nut.....	M6 .....	3
53.....	701-153.....	Handle .....		1
54.....	701-154.....	Lock Handle .....		1
55.....	701-155.....	Handle Grip .....		1
56.....	701-156.....	Head .....		1
57.....	TS-1503051.....	Socket Head Cap Screw.....	M6x20 .....	3
58.....	701-158.....	Gear.....		1
59.....	701-159.....	Collar .....		1
60.....	TS-1523011.....	Set Screw.....	M6x6 .....	1
61.....	701-161.....	Pinion Shaft.....		1
62.....	701-162.....	Chuck Access Cover.....		1
63.....	TS-2246122.....	Button Head Socket Screw.....	M6x12 .....	2
64.....	701-164E.....	Motor.....	230V/50Hz/1ph .....	1
.....	701-164A.....	Fan (not shown).....		1
.....	701-164B.....	Fan Cover (not shown).....		1
.....	701-164C.....	Starting Capacitor (not shown).....		1
.....	701-164D.....	Running Capacitor (not shown).....		1
65.....	701-165E.....	Switch Box .....		1
66.....	TS-081C052.....	Pan Head Screw.....	#10-24x3/4" .....	2
67.....	701-167E.....	Strain Relief.....	PG11.....	1
68.....	701-168E.....	Power Cord .....	HO5RN-F 3G 1.0mm <sup>2</sup> .....	1
69.....	701-169E.....	On/Off Switch.....		1
70.....	701-170.....	Chuck .....	1/2".....	1
71.....	6294204.....	Chuck Key.....		1
72.....	701-172.....	Locking Handle .....		1
73.....	701-173.....	Bushing Spacer .....		2
74.....	701-174.....	Wave Washer .....	M5.....	1
75.....	TS-1502051.....	Socket Head Cap Screw.....	M5x20 .....	1
76.....	701-176.....	Bushing .....	I.D. 5/8".....	1
77.....	701-177.....	Bushing .....	I.D. 3/4".....	1
.....	701-177A.....	Bushing(not shown).....	I.D. 13/16".....	1
78.....	701-178.....	Cylinder .....		1
.....	701-178A.....	Cylinder Assembly (#43, #78).....		1
79.....	23011020.....	Chuck Extension Adapter .....		1
80.....	701-180.....	Chisel Sharpening Cone .....		1
81.....	701-181E.....	I.D Label for CE(not shown) .....		1
82.....	701-182E.....	Motor Label for CE(not shown).....		1

**701**  
**1791310M**

	colour of strands	Litzenfarben	couleur des cordons
BK	black	schwarz	noir
WH	white	weiß	blanc
BU	blue	blau	bleu
YE	yellow	gelb	jaune
RD	red	rot	rouge
BN	brown	braun	brun
GY	grey	grau	gris
GNYE	green-yellow	grün-gelb	vert-jaune
OG	orange	orange	orange
VT	violet	violett	violet

	meaning of symbol	Bedeutung der Zeichen	interprétation
M	motor	Motor	moteur
S	switch	Schalter	interrupteur
C	condenser	Kondensator	condensateur
E	electronic unit	Elektronik Einheit	unité électronique
F	fuse	Sicherung	fusible
RS	reversing switch	Drehrichtungsschalter	commu. droite/gauche
CS	centrifugal switch	Fliehkraftschalter	déclencheur centrifuge
OL	overload cut-off	Überlastschuttschalter	déclencheur surcharge
LS	limit switch	Positionsendschalter	micro

**230/50/1**

