

JET

FS-1636N FOOT SHEAR
FS-1652N

FS-1636N....754636

FS-1652N....754652

PARTS LIST

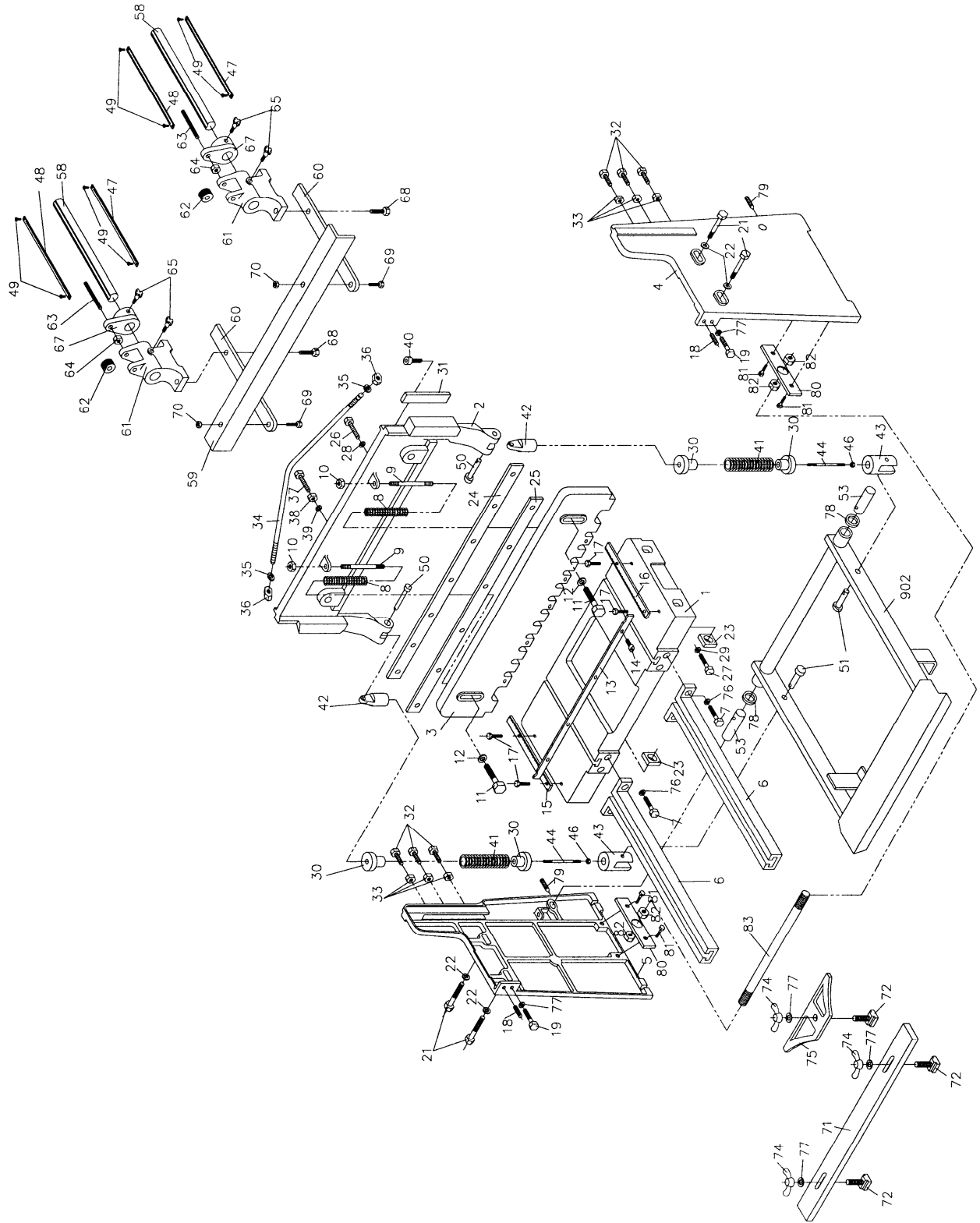
Walter Meier (Tool) AG
Tämperlistrasse 5
CH-8117 Fällanden
Switzerland
Phone +41 44 806 47 48
Fax +41 44 806 47 58
jetinfo.eu@waltermeier.com
www.jettools.com



P-754636, 754652

2010/06/25

Breakdown for FS-1636N & FS-1652N Foot Shear



Parts List for the FS-1636N & FS-1652N Foot Shear

Index No.	Part No.	Description	Size	Quantity
1	FS1636N-1	Table		1
	FS1652N-1	Table		1
2	FS1636N-2	Cutter Bar		1
	FS1652N-2	Cutter Bar		1
3	FS1636N-3	Hold Down		1
	FS1652N-3	Hold Down		1
4	FS1636N-4	R.H. Side Panel		1
5	FS1636N-5	L.H. Side Panel		1
6	FS1636N-6	Front Arm Extension		2
7	FS1636N-7	Screw	M12x45	4
8	FS1636N-8	Spring		2
9	FS1636N-9	Stud		2
10	FS1636N-10	Nut	M12	2
11	FS1636N-11	Screw	M12x80	2
12	FS1636N-12	Washer		2
13	FS1636N-13	Finger Guard		1
	FS1652N-13	Finger Guard		1
14	FS1636N-14	Screw	M6x12	4
15	FS1636N-15	Table Scale (L.H.)		1
16	FS1636N-16	Table Scale (R.H.)		1
17	FS1636N-17	Screw	M8x20	4
18	FS1636N-18	Set Screw	M10x45	2
19	FS1636N-19	Screw	M10x50	2
21	FS1636N-21	Bolt	M16x115	4
22	FS1636N-22	Washer	M16	4
23	FS1636N-23	Nut	M16	4
24	FS1636N-24	Upper Knife		1
	FS1652N-24	Upper Knife		1
25	FS1636N-25	Lower Knife		1
	FS1652N-25	Lower Knife		1
26	FS1636N-26	Screw	M10x40	7
27	FS1636N-27	Screw	M10x45	6
28	FS1636N-28	Washer		7
29	FS1636N-29	Washer		6
30	FS1636N-30	Spring Cap		4
31	FS1636N-31	Gib		2
32	FS1636N-32	Screw	M10x55	6
33	FS1636N-33	Nut	M10	6
34	FS1636N-34	Rod		1
	FS1652N-34	Rod		1
35	FS1636N-35	Washer	M16	2
36	FS1636N-36	Nut	M16	2
37	FS1636N-37	Screw	M16x80	1
38	FS1636N-38	Nut	M16	1
39	FS1636N-39	Washer	M16	1

Parts List for the FS-1636N & FS-1652N Foot Shear

Index No.	Part No.	Description	Size	Quantity
40	FS1636N-40	Hex Socket Cap Screw	M10x30	2
41	FS1636N-41	Spring		2
42	FS1636N-42	Swivel Top		2
43	FS1636N-43	Swivel Bottom		2
44	FS1636N-44	Stud		2
46	FS1636N-46	Nut	M16	2
47	FS1636N-47	Scale (metric)		2
48	FS1636N-48	Scale (inches)		2
49	FS1636N-49	Screw	M4x8	4
50	FS1636N-50	Pin	Ø12x70	2
51	FS1636N-51	Pin	Ø12x45	2
53	FS1636N-53	Brake Pin		2
58	FS1636N-58	Rod		2
59	FS1636N-59	Stop		1
	FS1652N-59	Stop		1
60	FS1636N-60	Extension Bar		2
61	FS1636N-61	Adjusting Block		2
62	FS1636N-62	Adjusting Dial		2
63	FS1636N-63	Adjusting Screw		2
64	FS1636N-64	Nut	M10	2
65	FS1636N-65	Knob		4
67	FS1636N-67	Adjusting Bracket		2
68	FS1636N-68	Screw	M10x25	4
69	FS1636N-69	Bolt	M10x25	2
70	FS1636N-70	Nut	M10	2
71	FS1636N-71	Stop		1
	FS1652N-71	Stop		1
72	FS1636N-72	"T" Nut		3
74	FS1636N-74	Wing Nut	M10	3
75	FS1636N-75	Bevel Gauge		1
76	FS1636N-76	Washer		4
77	FS1636N-77	Washer	M10	5
78	FS1636N-78	Washer		2
79	FS1636N-79	Set Screw	M10x50	2
80	FS1636N-80	Plate		2
81	FS1636N-81	Screw	M12x35	4
82	FS1636N-82	Nut	M16	4
83	FS1636N-83	Connection Bar	Ø16x1081mm	1
	FS1652N-83	Connection Bar	Ø16x1463mm	1
902	FS1636N-902	Pedal Assembly		1
	FS1652N-902	Pedal Assembly		1
	FS1636N-ID	ID Label (not shown)		1
	FS1652N-ID	ID Label (not shown)		1
	FS1636N-W	Warning Label (not shown)		1
	FS1636N-J	JET Label (not shown)		1