

J E T

JBG-150
JBG-200

BENCH GRINDER

577901M/ 577902M
230/50/1

PARTS LIST

Walter Meier (Tool) AG
Tämperlistrasse 5
CH-8117 Fällanden
Switzerland
Phone +41 44 806 47 48
Fax +41 44 806 47 58
jetinfo.eu@waltermeier.com
www.jettools.com



P-577901M, 577902M 2010/06/25

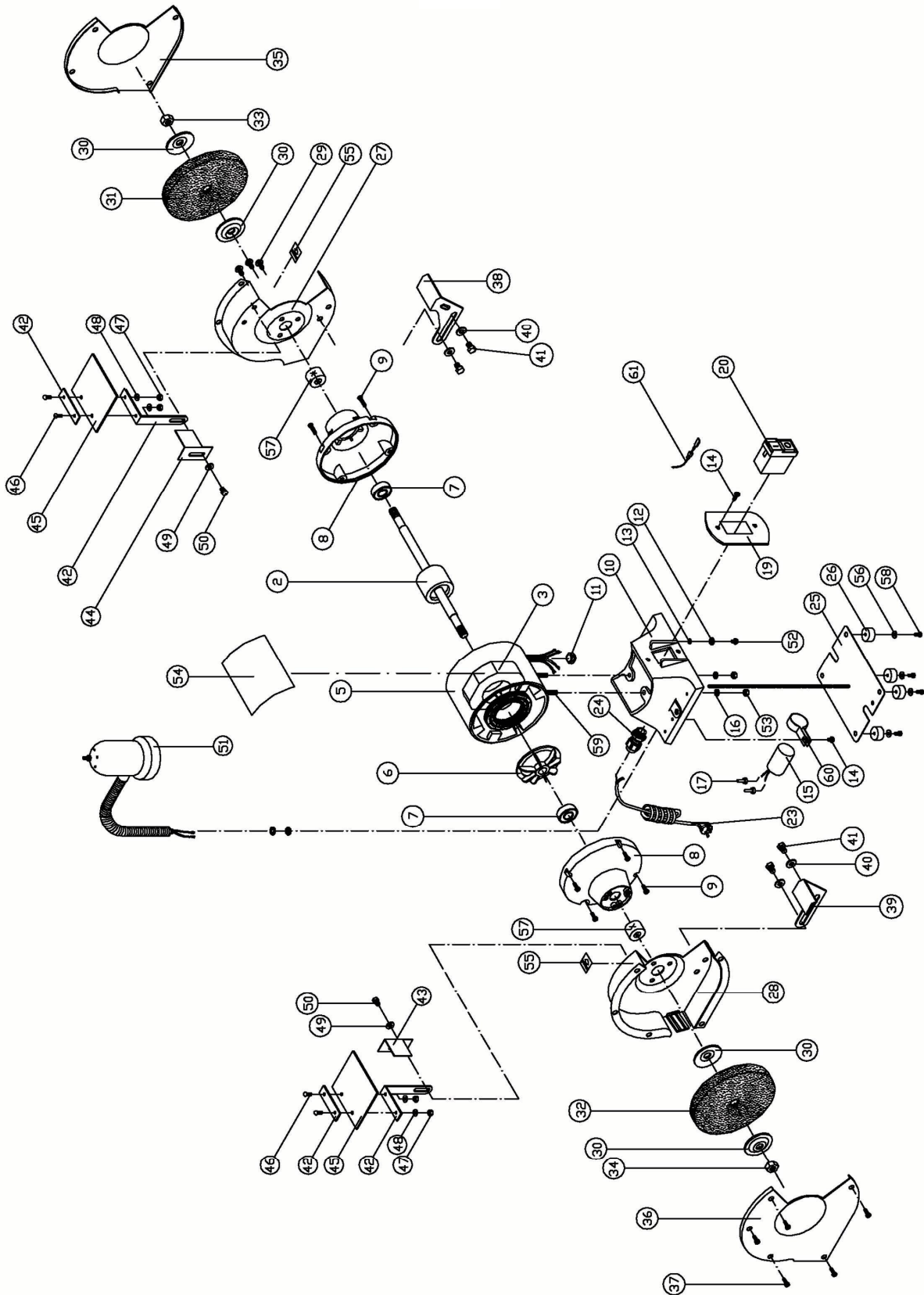
Parts List – Dual Bench Grinder

Index No.	Part No.	Description	Size	Qty.
2	JBG150-02E	Rotor Assembly	Ø53x35x Ø 16	1
	JBG200-02E	Rotor Assembly	Ø 57x50x Ø 19	1
3	JBG150-03E	Stator Assembly	Ø 111x Ø 53x35	1
	JBG200-03E	Stator Assembly	Ø 123x Ø 57x50	1
5	JBG150-05	Motor Housing		1
	JBG200-05	Motor Housing		1
6	JBG150-06	Plastic Fan		1
	JBG200-06	Plastic Fan		1
7	BB-6202ZZ	Ball Bearing	6202ZZ	2
	BB-6203ZZ	Ball Bearing	6203ZZ	2
8	JBG150-08	Aluminum Cover		2
	JBG200-08	Aluminum Cover		2
9	JBG150-09	Cross Head Screw W/washer	3/16"x5/8"	8
10	JBG150-10E	Base	1/4" GL	1
11	JBG150-11	Strain Relief	18mm	1
12	JBG150-12	Copper washer	5mm	1
13	JBG150-13	Tooth washer	M5	1
14	JBG150-14	Cross Head Screw W/washer	3/16" x 1/4"	3
15	JBG150-15E	Running Capacitor	8UF, 400V.	1
	JBG200-15E	Running Capacitor	16UF, 400V	1
16	TS-0720071	Lock Washer	1/4"	2
17	JBG150-17E	Terminals		4
19	JBG150-19E	Switch Plate		1
20	JBG150-20E	Switch		1
23	JBG150-23E	Power Cord		1
	JBG200-23E	Power Cord		1
24	JBG150-24	Wire Clamp	PG9	1
25	JBG150-25	Base Plate	1/4 GL	1
26	JBG150-26	Rubber Foot		4
27	JBG150-27E	Inner Wheel Guard (Right)	1/4 C Type	1
	JBG200-27E	Inner Wheel Guard (Right)	1/2 C Type	1
28	JBG150-28E	Inner Wheel Guard (Left)	1/4 C Type	1
	JBG200-28E	Inner Wheel Guard (Left)	1/2 C Type	1
29	JBG150-29	Cross Head Screw W/washer	1/4X3/8	6
30	JBG150-30	Flange Washer	1/2"	4
	JBG200-30	Flange Washer	5/8"	4
31	JBG150-31	Grinding Wheel	6", 36G	1
	576223	Grinding Wheel	8", 36G	1
32	JBG150-32	Grinding Wheel	6", 60G	1
	576225	Grinding Wheel	8", 60G	1
33	JBG150-33	Nut (Right)	1/2"	1
	JBG200-33	Nut (Right)	5/8" x 23	1
34	JBG150-34	Nut (Left)	1/2"	1
	JBG200-34	Nut (Left)	5/8" x 23	1
35	JBG150-35	Outer Wheel Guard (Right)	1/4 C Type	1
	JBG200-35	Outer Wheel Guard (Right)	1/2 C Type	1
36	JBG150-36	Outer Wheel Guard (Left)	1/4 C Type	1
	JBG200-36	Outer Wheel Guard (Left)	1/2 C Type	1

Parts List – Dual Bench Grinder

Index No.	Part No.	Description	Size	Qty.
37	TS-0810012	Machine Screw	#10-24 x 1/4"	10
38	JBG150-38	Tool Rest (Right)	1/3HP, 2mm	1
	JBG200-38	Tool Rest (Right)	1/2HP, 3mm	1
39	JBG150-39	Tool Rest (Left)	1/3HP, 2mm	1
	JBG200-39	Tool Rest (Left)	1/2HP, 3mm	1
40	TS-0680031	Flat Washer	5/16"	4
41	JBG150-41	Hex Cap Screw (only for JBG-150)	5/16"-18 x 3/8"	4
	TS-0051011	Hex Cap Screw (only for JBG-200)	5/16"-18 x 1/2"	4
42	JBG150-42	Eye Shield Bracket/Plate	1/4	2
43	JBG150-43	Spark Arrestor (Left)	1/4	1
44	JBG150-44	Spark Arrestor (Right)	1/4	1
45	JBG150-45	Eye Shield	1/4 UL	2
46	TS-081B032	Machine Screw	#8-32 x 1/2"	4
47	TS-0560061	Hex Nut	#8-32	4
48	TS-0692031	Flat Washer	#8	4
49	TS-0680021	Flat Washer	1/4"	2
50	JBG150-50	Hex Bolt	1/4"-20 x 3/8"	2
51	JBG150-51E	Work Light Assembly		1
52	JBG200-52	Cross Head Screw w/Washer	#10-24 x 1/4"	1
53	TS-0570011	Hex Nut	1/4"-20	2
54	JBG150-54E	I.D. Label		1
	JBG200-54E	I.D. Label		1
55	JBG150-55	Direction Label		2
56	TS-0680011	Flat Washer	3/16"	4
57	JBG200-57	Bushing (only for JBG-200)		2
58	TS-081C022	Machine Screw	#10-24 x 3/8"	4
59	JBG150-59	Cross Head Screw	1/4"-20x7/8"	2
60	JBG150-60E	Holder		1
	JBG20-60E	Holder		1
61	JBG150-61E	Extension line		2

Assembly Drawing



JBG-150 / JBG-200
577901M/ 577902M

230/50/1

	colour of strands	Litzenfarben	couleur des cordons
BK	black	schwarz	noir
WH	white	weiß	blanc
BU	blue	blau	bleu
YE	yellow	gelb	jaune
RD	red	rot	rouge
BN	brown	braun	brun
GY	grey	grau	gris
GNYE	green-yellow	grün-gelb	vert-jaune
OG	orange	orange	orange
VT	violet	violett	violet

	meaning of symbol	Bedeutung der Zeichen	interprétation
M	motor	Motor	moteur
S	switch	Schalter	interrupteur
C	condenser	Kondensator	condensateur
E	electronic unit	Elektronik Einheit	unité électronique
F	fuse	Sicherung	fusible
RS	reversing switch	Drehrichtungsschalter	commu. droite/gauche
CS	centrifugal switch	Fliehkraftschalter	déclencheur centrifuge
OL	overload cut-off	Überlastschutzschalter	déclencheur surcharge
LS	limit switch	Positionsendschalter	micro

