

JET

JDP-2800VS Drill Press

1792800M...230/50/1

1792800T....400/50/3

PARTS LIST

Walter Meier (TOOL) AG

Tämperlistr. 5

CH-8117 Fällanden

Switzerland

Phone +41 44 806 47 48

Fax +41 44 806 47 58

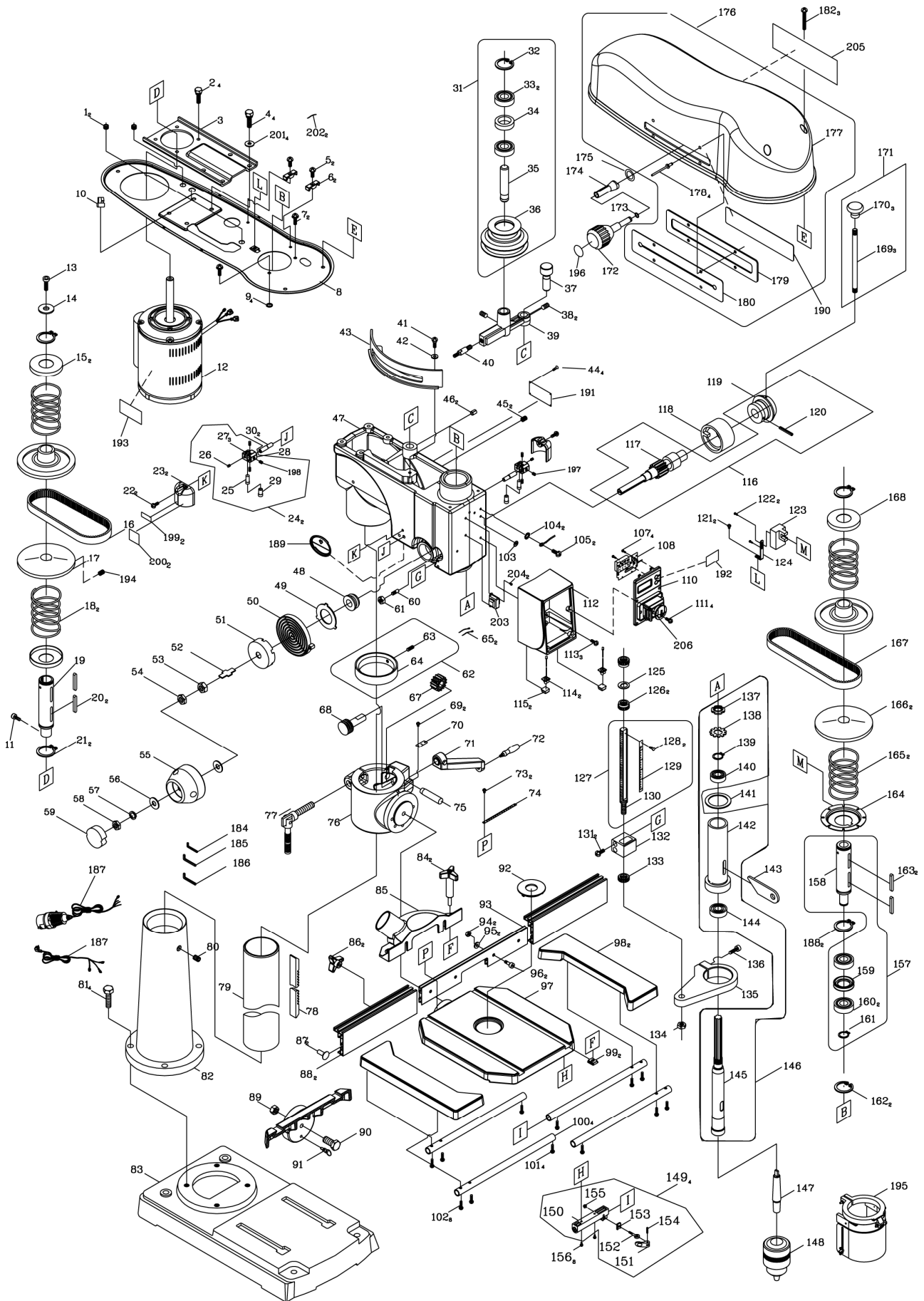
jetinfo.eu@waltermeier.com

www.jetwilton.com



P-1792800M/T 2010/10/25

Breakdown for JDP-2800VS



Parts List for JDP-2800VS

Index No.	Part No.	Description	Size	Qty
1	PM2800-001	Strain Relief		2
2	TS-1482051	Hex Cap Screw	M6x25	4
3	PM2800-003	Retaining Plate		1
4	TS-1490031	Hex Cap Screw	M8x20	4
5	TS-1533052	Pan Head Screw	M5x16	2
6	PM2800-007	Cord Clamp		2
7	TS-1534052	Pan Head Screw	M6x16	2
8	JDP2800-008E	Lower Pulley Cover		1
9	TS-0680021	Flat Washer	1/4	4
10	JDP2800-010E	Strain Relief		1
11	TS-1503041	Socket Head Cap Screw	M6x16	1
12	JDP2800-012E	Motor	1HP, 230V, 1Ph	1
	JDP2800-012AE	Motor	1.25HP, 400V, 3Ph	1
13	TS-1503031	Socket Head Cap Screw	M6x12	1
14	TS-0680021	Flat Washer	1/4	1
15	PM2800-016	Spring Cap		1
16	PM2800-017	Variable Speed Belt	17x5x776	1
17	PM2800-018	Pulley		2
18	PM2800-019	Compression Spring		2
19	PM2800-020	Shaft Sleeve		1
20	PM2800-021	Key	5x5x35	2
21	PM2800-022	C-Ring	A-30	2
22	TS-1533042	Pan Head Screw	M5x12	2
23	PM2800L-02	Guard		2
24	PM2800L-03	Laser Assembly		2
25	PM2800L-04	Laser Module		2
26	JDP2800-026E	Slotted Set Screw	M6x6	3
27	TS-1523011	Set Screw	M6x6	2
28	PM2800L-06	Laser Housing		2
29	PM2800L-08	Laser Plunger Housing		2
30	PM2800-023	Set Bolt		2
31	PM2800-024	Center Pulley Assembly		1
32	PM2800-025	C-Ring	B-35	1
33	BB-6202ZZ	Ball Bearing	6202ZZ	2
34	PM2800-027	Collar		1
35	PM2800-028	Center Shaft		1
36	PM2800-029	Center Pulley		1
37	PM2800-030	Post		1
38	TS-1524011	Set Screw	M8x8	2

39.....	PM2800-032	Speed Bar Seat	1
40.....	PM2800-033	Stud.....	1
41.....	TS-1534052	Pan Head Screw.....	M6x16	1
42.....	PM2800-035	Washer.....	1
43.....	PM2800-036	Guide.....	1
44.....	PM2800-037	Drive Screw.....	Ø2.3-5	4
45.....	TS-1525021	Set Screw.....	M10x12	2
46.....	PM2800-039	Spring Pin.....	M6x25	2
47.....	JDP2800-047E.....	Head	1
48.....	PM2800-041	Shaft Seat.....	1
49.....	PM2800-042	Spring Retainer.....	1
50.....	PM2800-043	Coil Spring.....	1
51.....	PM2800-044	Spring Cap	1
.....	PM2800-044A	Coil Spring Assembly (includes index # 49 and 51)	1
52.....	PM2800-045	Cushion	30x21-2	1
53.....	TS-0561052	Hex Nut	1/2-20UNF	1
54.....	TS-0571052	Hex Jam Nut.....	1/2-20UNF	1
55.....	PM2800-048	Hub	1
56.....	TS-2360121	Flat Washer.....	M12	2
57.....	TS-0720111	Lock Washer.....	1/2	1
58.....	TS-0561052	Hex Nut	1/2-20UNF	1
59.....	PM2800-052	Cover.....	1
60.....	PM2800-053	Quill Set Screw.....	M10x1.5-2A	1
61.....	TS-1540071	Hex Nut	M10	1
62.....	PM2800-055	Rack Ring Assembly.....	1
63.....	TS-1523021	Set Screw.....	M6x8	1
64.....	PM2800-057	Rack Ring.....	1
65.....	PM2800-058	Lead Wire Assembly.....	26AWG*2C-550MM	2
67.....	PM2800-060	Gear	1
68.....	PM2800-061	Worm.....	1
69.....	PM2800-037	Drive Screw.....	Ø2.3-5	2
70.....	PM2800-063	Centering Scale	1
71.....	PM2800-064	Crank Arm	1
72.....	PM2800-065	Crank Arm Handle	M10	1
73.....	PM2800-037	Drive Screw.....	Ø2.3-5	2
74.....	PM2800-067	Tilt Angle Scale.....	1
75.....	PM2800-068	Gear Shaft.....	1
76.....	PM2800-069A	Table Bracket	1
77.....	PM2800-070	Column Lock Handle.....	M12x35	1
78.....	PM2800-071	Rack.....	108T	1
79.....	PM2800-072	Column.....	1

80	TS-1525021	Set Screw	M10x12	1
81	TS-1491061	Hex Cap Screw	M10x40	4
82	JDP2800-082E	Column Holder		1
83	JDP2800-083E	Base		1
84	PM2800-077	Locking Knob		2
85	PM2800-078	Dust Port		1
86	PM2800-079	Knob		2
87	PM2800-080	Carriage Bolt	M6x20	2
88	PM2800-081	Fence		2
89	PM2800-082	Nut	5/8-11	1
90	PM2800-083	Hex Bolt	5/8-11x2-3/8	1
91	PM2800-084	Alignment Bolt Assembly		1
92	PM2800-085	Table Insert		1
93	PM2800-086	Fence Body		1
94	TS-1540041	Hex Nut	M6	2
95	PM2800-088	Washer	8x15-1	2
96	TS-1503031	Socket Head Cap Screw	M6x12	2
97	PM2800-090	Table		1
98	PM2800-091	Table Extension Wing		2
99	PM2800-092	T-Nut		2
100	PM2800-093	Slide Tube		4
101	PM2800-094	Pan Head Tapping Screw	M5x10	4
102	PM2800-095	Pan Head Tapping Screw	M6x25	8
103	PM2800-096	Grounding Sticker		1
104	PM2800-097	Tooth Washer	M5	2
105	TS-1533032	Pan Head Screw	M5x10	2
107	PM2800-100	Truss Head Tapping Screw	M3x8	4
108	JDP2800-108E	Controller Assembly	230V, 50Hz	1
110	JDP2800-110E	Switch Cover Assembly	Europe Type	1
111	PM2800-104	Pan Head Tapping Screw	M5x16	4
112	PM2800-105	Switch Box		1
113	TS-1533052	Pan Head Screw	M5x16	3
114	PM2800-107	LED Lamp Assembly		2
115	PM2800-108	LED Lamp Cover		2
116	PM2800-109	Feed Shaft Assembly		1
117	PM2800-110	Feed Shaft		1
118	PM2800-111	Ring		1
119	PM2800-112	Hub		1
120	PM2800-113	Spring Pin		1
121	TS-1533032	Pan Head Screw	M5x10	1
122	PM2800-115	Truss Head Tapping Screw	M2x8	2

123	PM2800-116	Photo Interrupt Module	1
124	PM2800-117	Bracket	1
125	PM2800-118	Washer	1
126	PM2800-119	Stop Nut	M16 2
127	JDP2800-127E	Depth Stop Bolt & Scale Assembly	MM 1
128	PM2800-037	Drive Screw	Ø2.3-5 2
129	JDP2800-129E	Scale	MM 1
130	PM2800-123	Depth Stop Bolt	1
131	TS-1534092	Pan Head Screw	M6x35 2
132	PM2800-125	Plunge Housing	1
133	PM2800-126	Circular Nut	1
134	TS-1540071	Hex Nut	M10 1
135	JDP2800-135E	Set Collar	1
136	TS-1504051	Socket Head Cap Screw	M8x25 1
137	PM2800-130	Spindle Nut	1
138	PM2800-131	Nut Lock	1
139	PM2800-132	Washer	1
140	BB-6203ZZ	Ball Bearing	6203ZZ 1
141	PM2800-134	Rubber Washer	1
142	PM2800-135	Quill	1
143	PM2800-136	Drift Key	1
144	BB-6205ZZ	Ball Bearing	6205ZZ 1
145	PM2800-138	Spindle	1
146	PM2800-139	Spindle Assembly	1
147	JDP2800-147E	Arbor	MT2XB16 1
148	JDP2800-148E	Keyless Chuck	B16-16MM 1
149	PM2800-142	Slide Base Assembly	4
150	PM2800-143	Slide Base	1
151	PM2800-144	Clamp Handle	1
152	PM2800-145	Bolt	1
153	PM2800-146	Cushion	1
154	PM2800-147	Spring Pin	M5x20 1
155	TS-1541011	Lock Nut	M5 1
156	TS-1533042	Pan Head Screw	M5x12 8
157	PM2800-150	Drive Sleeve Assembly	1
158	PM2800-151	Drive Sleeve	1
159	PM2800-152	Collar	1
160	BB-6205ZZ	Ball Bearing	6205ZZ 2
161	PM2800-154	C-Ring	A-25 1
162	PM2800-155	Retaining Ring	2
163	PM2800-021	Key	5x5x35 2

164	PM2800-157	Spring Cap	1
165	PM2800-158	Compression Spring	2
166	PM2800-159	Pulley	2
167	PM2800-160	Variable Speed Belt	17x5x570 1
168	PM2800-161	Spring Cap	1
169	PM2800-162	Handle only available PM2800-164	
170	PM2800-163	Handle Grip only available PM2800-164	
171	PM2800-164	Handle Assembly	1
172	PM2800-165	Shift Knob	1
173	PM2800-166	O-Ring	P6 1
174	PM2800-167	Collar	1
175	PM2800-168	Washer	1/2x1-3/64 1
176	PM2800-169	Pulley Cover Assembly	1
177	PM2800-170	Pulley Cover	1
178	PM2800-171	Rivet	3/16x27/64 4
179	PM2800-172	Set Plate	1
180	PM2800-173	Bumper	1
182	TS-2286402	Pan Head Screw	M6x40 3
184	TS-152704	Hex Wrench	3 mm 1
185	TS-152706	Hex Wrench	5 mm 1
186	TS-152707	Hex Wrench	6 mm 1
187	JDP2800-187E	Power Cord	230V, 1Ph 1
	JDP2800-187AE	Power Cord	400V, 3Ph 1
188	PM2800-181	Retaining Ring	2
189	PM2800-182	Cover	1
190	JDP2800-190E	Speed Control Label	1
191	JDP2800-191E	I.D. Label	230V, 1Ph 1
	JDP2800-191AE	I.D. Label	400V, 3Ph 1
192	JDP2800-192E	Display Label	1
193	JDP2800-191E	Motor Label	230V, 1Ph 1
	JDP2800-191AE	Motor Label	400V, 3Ph 1
195	JDP2800-195E	Chuck Guard	CE Type 1
196	JDP2800-196E	Indicator Label	1
197	JDP2800-197E	R Label	1
198	JDP2800-198E	L Label	1
199	JDP2800-199E	Laser Label	Red 2
200	JDP2800-200E	Laser Warning Label	Yellow 2
201	TS-1550061	Flat Washer	M8 1
202	JDP2800-202E	Locking Cable Tie	1
203	JDP2800-203E	Transformer	only for 400V, 3Ph 1
204	JDP2800-204E	Pan Head Screw	M4x12 1

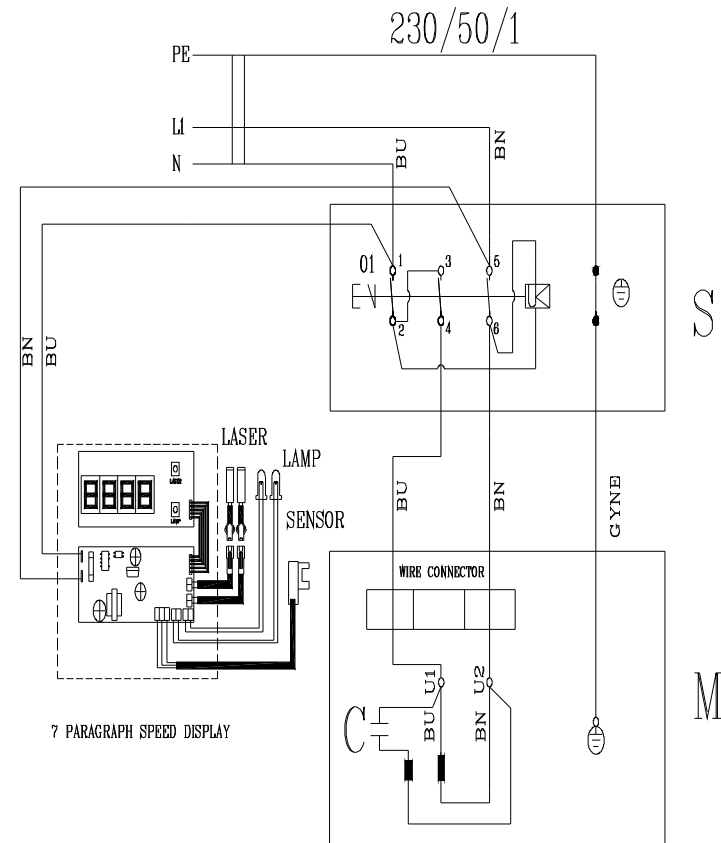
205JDP2800-205E..... JET Logo 1
206JDP2800-206E..... Switch..... 230V, 1Ph..... 1
.....JDP2800-206AE Switch..... 400V, 3Ph..... 1

JDP-2800VS 1792800M

	colour of strands	Litzenfarben	couleur des cordons
BK	black	schwarz	noir
WH	white	weiß	blanc
BU	blue	blau	bleu
YE	yellow	gelb	jaune
RD	red	rot	rouge
BN	brown	braun	brun
GY	grey	grau	gris
GNYE	green-yellow	grün-gelb	vert-jaune
OG	orange	orange	orange
VT	violet	violett	violet

	meaning of symbol	Bedeutung	interprétation
M	motor	Motor	moteur
S	switch	Schalter	interrupteur
C	condenser	Kondensator	condensateur
E	electronic unit	Elektronik Einheit	unité électronique
F	fuse	Sicherung	fusible
RS	reversing switch	Drehrichtungsschalter	commu. droite/gauche
CS	centrifugal switch	Fliehkraftschalter	déclencheur centrifuge
OL	overload cut-off	Überlastschuttschalter	déclencheur surcharge
LS	limit switch	Positionsendschalter	micro

230/50/1



JDP-2800VS

1792800T

	colour of strands	Litzenfarben	couleur des cordons
BK	black	schwarz	noir
WH	white	weiß	blanc
BU	blue	blau	bleu
YE	yellow	gelb	jaune
RD	red	rot	rouge
BN	brown	braun	brun
GY	grey	grau	gris
GNYE	green-yellow	grün-gelb	vert-jaune
OG	orange	orange	orange
VT	violet	violett	violet

	meaning of symbol	Bedeutung	interprétation
M	motor	Motor	moteur
S	switch	Schalter	interrupteur
C	condenser	Kondensator	condensateur
E	electronic unit	Elektronik Einheit	unité électronique
F	fuse	Sicherung	fusible
RS	reversing switch	Drehrichtungsschalter	commu. droite/gauche
CS	centrifugal switch	Fliehkraftschalter	déclencheur centrifuge
OL	overload cut-off	Überlastschuttschalter	déclencheur surcharge
LS	limit switch	Positionsendschalter	micro

400/50/3

