

JET

JWL-1220VS Variable Speed Wood Lathe

708376VSM ...230/50/1

PARTS LIST

Walter Meier (Fertigung) AG

Bahnstrasse 24

8603 Schwerzenbach

Switzerland

Phone +41 44 806 47 48

Fax +41 44 806 47 58

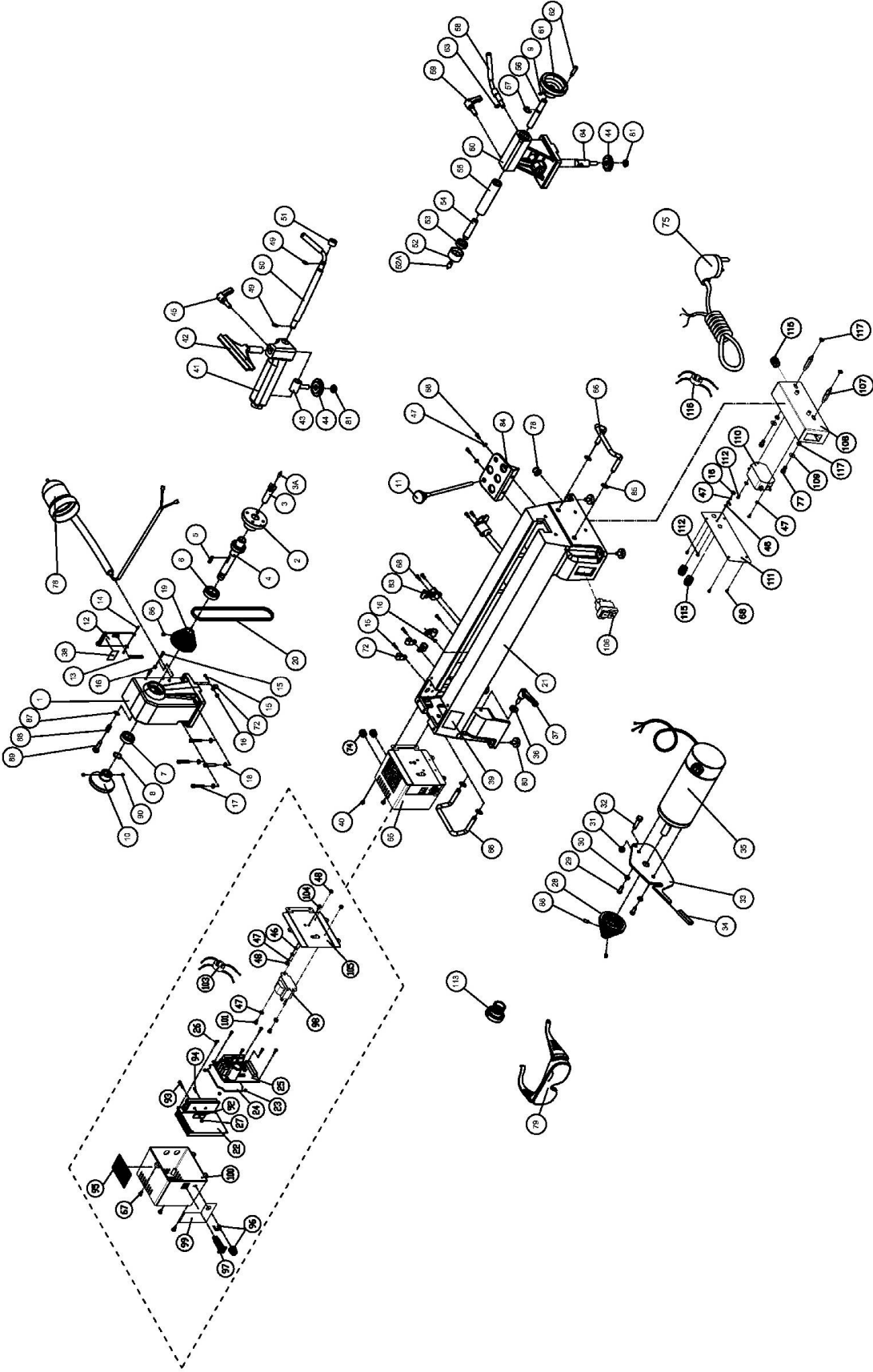
jetinfo.eu@waltermeier.com

www.jettools.com



P-708376VSM 02/09

JWL-1220VS Assembly



JWL-1220VS Parts List

Index No	Part No	Description	Size	Qty
1.....	JWL1220-101.....	Headstock.....		1
2.....	JML-2.....	Faceplate.....	3".....	1
3.....	JML-3.....	Spur Center.....	MT2.....	1
3A.....	JML-3A.....	Center Point for Spur Center.....		1
4.....	JML-4.....	Spindle.....	1" x 8 TPI.....	1
5.....	JML-5.....	Key.....	5x5x25mm.....	1
6.....	BB-6005VV.....	Ball Bearing.....	6005VV.....	1
7.....	BB-6004VV.....	Ball Bearing.....	6004VV.....	1
8.....	JML-8.....	Wave Washer.....		1
9.....	TS-0267041.....	Socket Set Screw.....	1/4"-20x3/8".....	2
10.....	JML1014-110.....	Hand Wheel.....		1
11.....	JML-11.....	Drift Rod.....		1
12.....	JML-12W.....	Spindle Pulley Door.....		1
13.....	JML-13.....	Spring.....		1
14.....	JML-14.....	Roll Pin.....	Ø3 x 10mm.....	2
15.....	TS-081C042.....	Pan Head Screw.....	#10-24x5/8".....	6
16.....	TS-0560071.....	Hex Nut.....	#10-24.....	6
17.....	TS-0207071.....	Socket Head Cap Screw.....	1/4"-20x1-1/4".....	4
18.....	TS-0720071.....	Lock Washer.....	1/4".....	4
19.....	JML1014-119.....	Spindle Pulley.....		1
20.....	JWL1220-120.....	V-Belt.....	260J.....	1
21.....	JWL1220VS-121E.....	Bed.....		1
22.....	JWL1220VS-122.....	Heat Sink.....		1
23.....	JWL1220VS-123.....	Spacer.....		4
24.....	JWL1220VS-124.....	Insulator.....		1
25.....	JWL1220VS-125E.....	Circuit Board.....		1
26.....	JMLVS-101.....	Tapping Screw.....		4
27.....	TS-1540021.....	Hex Nut.....	M4.....	1
28.....	JML-28.....	Motor Pulley.....		1
29.....	TS-1482031.....	Hex Cap Screw.....	M6x16.....	2
30.....	TS-2361061.....	Lock Washer.....	M6.....	2
31.....	TS-0640081.....	Nylon Insert Lock Nut.....	5/16"-18.....	1
32.....	TS-0051061.....	Hex Cap Screw.....	5/16"-18x1-1/4".....	1
33.....	JWL1220-133.....	Motor Bracket.....		1
34.....	JWL1220-134.....	White Handle Protector.....		1
35.....	JWL1220VS-135E.....	Motor.....	3/4HP.....	1
.....	JWL1220VS-135MBE.....	Motor Carbon Brush.....		2
36.....	TS-0680031.....	Flat Washer.....	5/16".....	1
37.....	JML-37A.....	Lock Handle Assembly, Motor Plate.....		1
38.....	JWL1220VS-1101E.....	Speed Chart.....		1
39.....	JWL1220VS-1102E.....	I.D. Label.....		1
40.....	TS-081C022.....	Screw.....	#10-24x3/8.....	2
.....	JWL1220-TRBA.....	Tool Rest Body Assembly (Index # 41, 43-45, 49-51, 81).....		1
41.....	JWL1220-141.....	Tool Rest Body.....		1
42.....	JWL1220-142.....	Tool Rest.....	6".....	1
.....	JWL1220-142A.....	Tool Rest.....	10".....	1
43.....	JML-43.....	Bolt.....		1
44.....	JML-44.....	Clamp.....		2
45.....	JML-45A.....	Lock Handle Assembly, Tool Rest Body.....		1
46.....	JWL1220VS-146.....	Star Washer.....	M5.....	3
47.....	TS-1550031.....	Flat Washer.....	M5.....	8
48.....	TS-1540031.....	Hex Nut.....	M5.....	3
49.....	JML-49.....	C-Ring.....	STW-12.....	2
50.....	JWL1220-150.....	Eccentric Locking Rod.....		1
51.....	JML-51.....	Bushing.....		1

JWL-1220VS Parts List

Index No	Part No	Description	Size	Qty
52	JML-52	Live Center Head		1
52A	JML-52A	Center Point for Live Center		1
53	BB-6002ZZ	Ball Bearing	6002ZZ	1
54	JML-54	Live Center Shaft		1
	708331	Live Center Assembly (not shown)		1
55	JML-55	Tailstock Spindle		1
56	JML-56	Lead screw		1
57	JML-57	E-Ring	ETW-12	1
58	JML-58	Eccentric Locking Rod		1
59	JML-59A	Lock Handle Assembly, Tailstock		1
60	JWL1220-160	Tailstock		1
61	JML-61	Hand Wheel		1
62	JML-62	Handle		1
63	JML-63	C-Ring	STW-10	1
64	JML-64	Bolt		1
65	JWL1220VS-165E	Controller Assembly (Index # 22-27, 46-48, 67,92-105)		1
66	JWL1220-193	Lift Handle		2
67	JWL1220VS-167	Screw	M5x8	4
68	TS-081C032	Pan Head Screw	#10-24x1/2"	10
72	JWL1220-172	Cord Clamp		5
74	JWL1220VS-174	Strain Relief	SB6R-3	2
75	JWL1220VS-175E	Power Cord		1
76	JML-74	Cord Protector		1
77	JWL1220VS-177E	Socket Head Cap Screw	1/4-20-1/4	2
78	JWL1220-198E	Work Lamp		1
79	JML-79	Safety Goggles		1
80	JML-80	Rubber Foot		4
81	JML-81	Clamp Nut		2
83	JWL1220-197	Cord Wrap Bracket		2
84	JWL1220-195	Tool Shelf		1
85	JWL1220-194	C-Ring	STW-10	4
86	TS-1523031	Socket Set Screw	M6x10	3
87	JML1014-187	C-Ring	STW-9	1
88	JML1014-188	Spring		1
89	JML1014-189	Index Pin		1
90	TS-0267021	Socket Set Screw	1/4"-20x1/4"	2
92	JWL1220VS-192	Clamp Bracket		1
93	TS-2284202	Pan Head Screw	M4x20	1
94	TS-1532042	Pan Head Screw	M4x12	1
95	JWL1220VS-195E	Speed Label		1
96	JWL1220VS-196	Control Potentiometer Assembly		1
97	JWL1220VS-197E	Circuit Breaker		1
98	JWL1220VS-198E	Common Mode Choke		1
99	JWL1220VS-199E	Control Panel Label		1
100	JWL1220VS-100E	Control Box Cover		1
101	JWL1220VS-101E	Screw	M5X8	2
103	JWL1220VS-103E	Toroidal		1
104	TS-1533032	Pan Head Screw	M5x10	1
105	JWL1220VS-139	Hinge Plate		1
106	72-2004E	Magnetic Switch		1
107	JWL1220VS-107E	Bolt		2

Index No	Part No	Description	Size	Qty
108	JWL1220VS-108E	Switch Box		1
109	TS-0680021	Flat Washer	1/4	2
110	JWL1220VS-110E	Filter		1
111	JWL1220VS-111E	Switch Cover Plate		1
112	JWL1220VS-112E	Pan Head Screw	#10-24x5/16	3
113	10000450	Adaptor		1
114	JWL1220VS-114E	Switch Cord (not shown)		1
115	JML-70E	Strain Relief		3
116	JWL1220VS-116E	Toroidal		1
117	TS-0733041	Star Washer	1/4	4

**JWL-1220VS
708376VSM**

230/50/1

	colour of strands	Litzenfarben	couleur des cordons
BK	black	schwarz	noir
WH	white	weiß	blanc
BU	blue	blau	bleu
YE	yellow	gelb	jaune
RD	red	rot	rouge
BN	brown	braun	brun
GY	grey	grau	gris
GNYE	green-yellow	grün-gelb	vert-jaune
OG	orange	orange	orange
VT	violet	violett	violet

	meaning of symbol	Bedeutung der Zeichen	interprétation
M	motor	Motor	moteur
S	switch	Schalter	interrupteur
C	condenser	Kondensator	condensateur
E	electronic unit	Elektronik Einheit	unité électronique
F	fuse	Sicherung	fusible
RS	reversing switch	Drehrichtungsschalter	commu. droite/gauche
CS	centrifugal switch	Fliehkraftschalter	déclencheur centrifuge
OL	overload cut-off	Überlastschutzschalter	déclencheur surcharge
L	machine lamp	Maschinenleuchte	lampe

