

JET

JWL-1642

WOOD LATHE

**708359LM
230/50/1**

PARTS LIST

Walter Meier (Fertigung) AG

Bahnstrasse 24

8603 Schwerzenbach

Switzerland

Phone +41 44 806 47 48

Fax +41 44 806 47 58

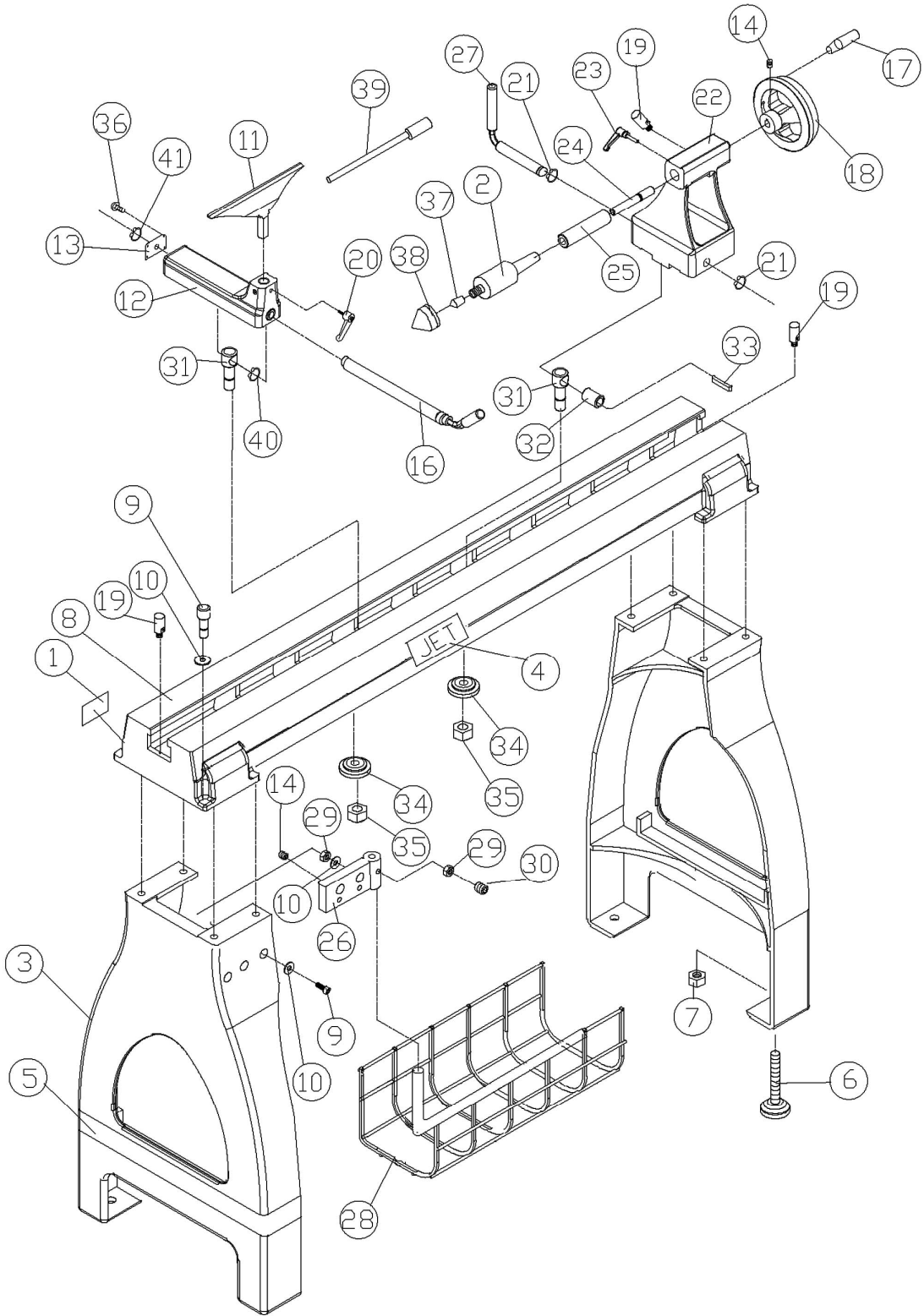
jetinfo.eu@waltermeier.com

www.jettools.com



P-708359M 2009/08/28

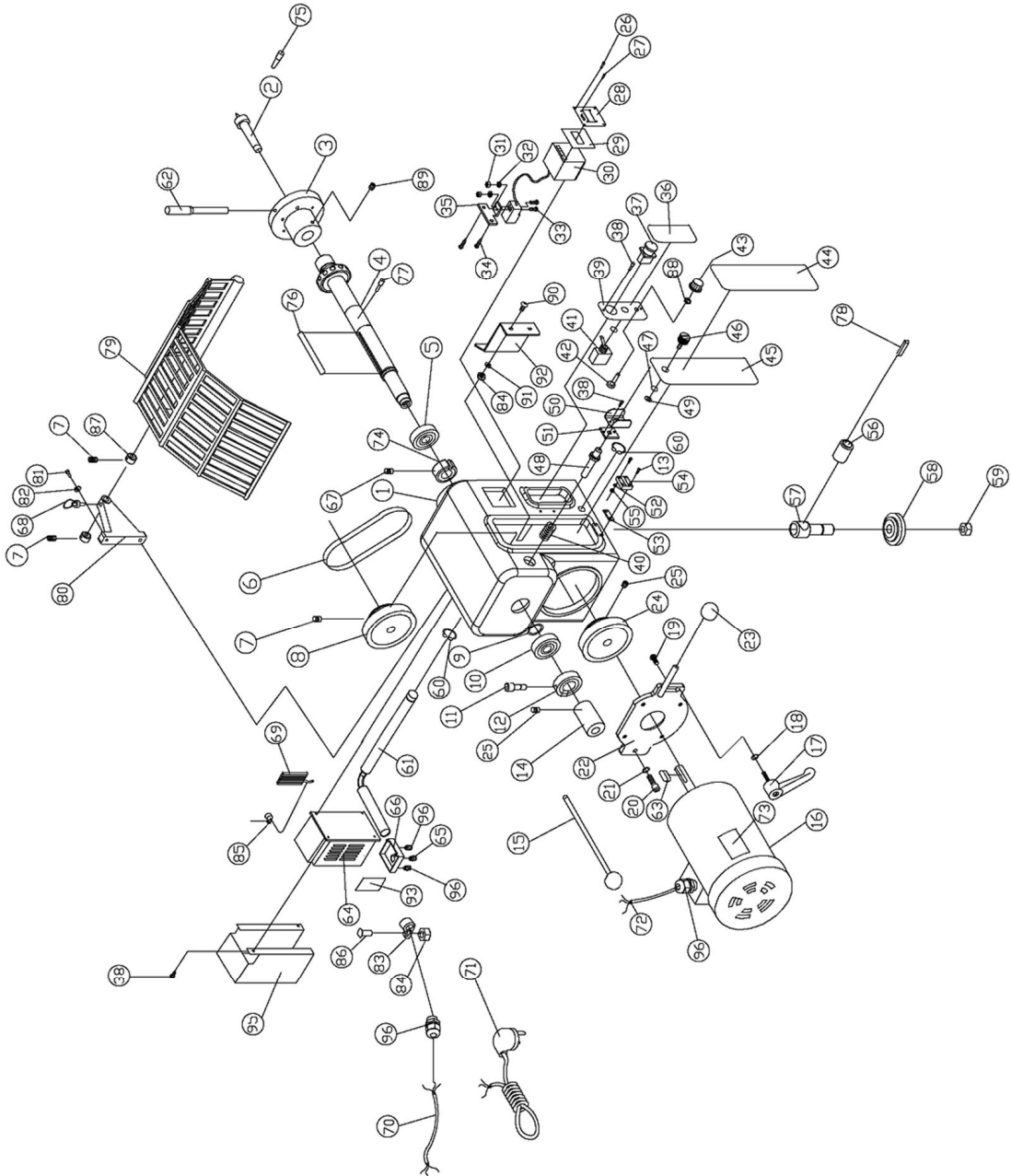
Stand and Bed Assembly



Parts List for the JWL-1642 Woodworking Lathe
Stand and Bed Assembly

Index No.	Part No.	Description	Size	Qty.
1.....	JWL1642-201E.....	I.D. Label.....		1
2.....	JWL1642-202.....	Live Center.....	MT2.....	1
3.....	JWL1642-203.....	Stand.....		2
4.....	JWL1442-219.....	JET Label.....		1
5.....	JWL1642-205.....	JET Stripe.....		2
6.....	JWL1642-206.....	Adjustable Foot.....	3/8".....	4
7.....	TS-0561031.....	Hex Nut.....	3/8".....	4
8.....	JWL1442-201.....	Bed.....		1
9.....	TS-0208081.....	Hex Socket Cap Screw.....	5/16"-18 x 1-1/2".....	10
10.....	TS-0680032.....	Flat Washer.....	5/16".....	12
11.....	JWL1642-211.....	Tool Rest.....		1
12.....	JWL1442-207.....	Tool Rest Base.....		1
13.....	JWL1442-208.....	End Cover.....		1
14.....	TS-0267021.....	Set Screw.....	1/4"-20 x 1/4".....	4
16.....	JWL1442-210A.....	Tool Support Rod.....		1
17.....	JWL1442-211.....	Handle.....		1
18.....	JWL1442-212.....	Handwheel.....		1
19.....	JWL1442-202.....	Stud.....		3
20.....	JWL1442-206.....	Tool Support Handle.....	3/8".....	1
21.....	JWL1442-124.....	C-Ring.....	S19.....	2
22.....	JWL1642-222.....	Tailstock.....		1
23.....	JWL1442-218.....	Tailstock Quill Handle.....	5/16".....	1
24.....	JWL1442-214.....	Lead Screw.....		1
25.....	JWL1442-215E.....	Quill.....		1
26.....	JWL1642-226.....	Bracket.....		1
27.....	JWL1442-217.....	Tailstock Rod.....		1
28.....	JWL1642-228.....	Storage Basket.....		1
29.....	TS-0570021.....	Hex Nut.....	5/16".....	3
30.....	TS-0270061.....	Set Screw.....	5/16"-18 x 5/8".....	1
31.....	JWL1442-128.....	Clamp Bolt.....		2
32.....	JWL1442-127.....	Bushing.....		1
33.....	JWL1442-126.....	Key.....	5 x 5 x 30.....	1
34.....	JWL1442-154.....	Clamp.....		2
35.....	TS-0561081.....	Hex Nut.....	3/4"-10.....	2
36.....	6295736.....	Hex Socket Cap Screw.....	10-24 x 1/2".....	4
37.....	JWL1642-237.....	Tip.....		1
38.....	JWL1642-238.....	Cap.....		1
39.....	JWL1642-239.....	Knockout Rod.....		1
40.....	JWL1442-228.....	C-Ring.....	S25.....	1
41.....	JWL1442-229.....	C-Ring.....	S18.....	1
.....	JWL1642-TCA.....	Tailstock Complete Assembly (not shown).....		1
.....	JWL1642-TRCA.....	Tool Rest Complete Assembly (not shown).....		1

Headstock Assembly



Parts List for the JWL-1642 Woodworking Lathe

Headstock Assembly

Index No.	Part No.	Description	Size	Qty.
1.....	JWL1642-101E.....	Headstock		1
2.....	JWL1642-102	Spur Center.....	MT2	1
3.....	JWL1642-103E.....	Face Plate	6".....	1
4.....	JWL1642-104E.....	Spindle		1
5.....	BB-6207ZZ.....	Ball Bearing.....	6207ZZ.....	1
6.....	VB-180J	Poly-V Belt	180J.....	1
7.....	TS-0270011	Set Screw.....	5/16"-18 x 1/4"	4
8.....	JWL1642-108	Spindle Pulley.....		1
9.....	JWL1642-109	Wave Washer	ø49	1
10	BB-6205ZZ.....	Ball Bearing.....	6205ZZ.....	1
11	TS-0207041	Hex Socket Cap Screw	1/4"-20 x 3/4"	1
12	JWL1642-112	Lock Nut.....	M22	1
13	TS-0207021	Hex Socket Cap Screw	1/4"-20 x 5/8"	4
14	JWL1642-114	Hand Wheel		1
15	JWL1442-164	Knockout Rod		1
16	JWL1642-116E.....	Motor	1.5 HP	1
.....	JWL1642-MFC.....	Motor Fan Cover (not shown).....		1
.....	JWL1642-MF	Motor Fan (not shown).....		1
17	JWL1642-117	Handle	3/8"-16 x 1".....	1
18	TS-0680042	Flat Washer.....	3/8".....	1
19	TS-228820	Flat Head Screw	M8 x 20	4
20	TS-0209051	Hex Socket Cap Screw	3/8"-16 x 1".....	1
21	TS-0720091	Lock Washer.....	3/8".....	1
22	JWL1642-122	Motor Assembly Plate		1
23	JWL1642-123	Knob		1
24	JWL1642-124	Motor Pulley.....		1
25	TS-0267021	Set Screw.....	1/4"-20 x 1/4"	4
26	TS-0206031	Socket Head Cap Screw.....	#10-24 x 5/8".....	4
27	JWL1642-127	Tap Screw	M3x10.....	4
28	JWL1642-128E.....	DRO Cover.....		1
29	JWL1642-129	Plate		1
30	JWL1642-130E.....	Digital Readout		1
31	TS-1540011	Nut	M3.....	2
32	TS-236103	Lock Washer.....	M3.....	2
33	TS-2283202	Round Head Screw	M3 x 20	2
34	JWL1642-134	Tapping Screw.....	1/4" x 1/2"	2
35	JWL1642-135	Bracket		1
36	JWL1642-136	Label Control Panel.....		1
37	JWL1642-137	Push/Pull Switch.....		1
38	TS-0206011	Socket Head Cap Screw.....	#10-24 x 3/8".....	8
39	JWL1642-139	Panel Cover		1
40	JWL1442-116	Spring		1
41	JWL1642-141	Fwd/Rev Switch.....		1
42	JWL1642-142	Variable Speed Control.....		1
43	JWL1642-143	Variable Speed Knob		1
44	JWL1642-144E.....	Speed Label.....		1
45	JWL1642-145	Belt Door		1
46	JWL1642-146E.....	Knob		1
47	JWL1642-147	O-Ring.....		1
48	JWL1442-122	Spindle Lock Pin.....		1

Index No.	Part No.	Description	Size	Qty.
49	JWL1642-149	Retaining Washer		1
50	JWL1442-121	Bracket		1
51	JWL1442-153	Plate		1
52	TS-0720041	Lock Washer	#8	2
53	JWL1642-155	Pad		1
54	JWL1642-154	Door Hinge		1
55	TS-056006	Hex Nut	#8-32	2
56	JWL1442-127	Bushing		1
57	JWL1442-128	Clamp Bolt		1
58	JWL1442-154	Clamp		1
59	TS-0561081	Hex Nut	3/4"-10	1
60	JWL1442-124	C-Ring	S19	2
61	JWL1642-161	Lever		1
62	JWL1642-162	Handle		1
63	JWL1642-163	Key	5 x 5 x 40	1
64	JWL1642-164E	Inverter		1
65	JWL1642-165E	Strain Relief	PG9	1
66	JWL1642-166E	Bracket		1
67	TS-0270011	Set Screw	5/16"-18 x 1/4"	1
68	JWL1642-168	Plunger		1
69	JWL1642-169	Braking Resistor		1
70	JWL1642-170	Signal Cord		1
71	JWL1642-171E	Power Cord		1
72	JWL1642-172E	Motor Cord		1
73	JWL1642-173E	Motor Label		1
74	JWL1642-174	Collar		1
75	JWL1442-169	Index Pin		1
76	JWL1642-176	Key	8 x 8 x 90	1
77	TS-0051021	Hex Head Bolt	5/16"-18 x 5/8"	4
78	JWL1442-126	Key	5 x 5 x 30	1
79	JWL1642-179	Guard		1
80	JWL1642-180	Guard Bracket		1
81	TS-0209071	Hex Socket Cap Screw	3/8"-16 x 1-1/2"	2
82	TS-0720091	Lock Washer	3/8"	2
83	JWL1642-183	Cable Clamp		1
84	TS-056007	Hex Nut	#10	3
85	JWL1642-185	Cable Clamp		1
86	TS-0206021	Hex Socket Cap Screw	#10-24 x 1/2"	1
87	JWL1642-187	Collar		2
88	JWL1642-188	Hex Nut		2
89	TS-1524031	Set Screw	M8x12	2
90	JWL1642-190E	Pan Head Screw	#10-24x5/8"	2
91	JWL1642-191E	Flat Washer	#10	2
92	JWL1642-194E	Safety Plate		1
93	JWL1642-193E	Inverter Label		2
95	JWL1642-195E	Inverter Guard		1
96	JWL1642-196E	Strain Relief	PG13.5	4

JWL-1642 708359LM

	colour of strands	Litzenfarben	couleur des cordons
BK	black	schwarz	noir
WH	white	weiß	blanc
BU	blue	blau	bleu
YE	yellow	gelb	jaune
RD	red	rot	rouge
BN	brown	braun	brun
GY	grey	grau	gris
GNYE	green-yellow	grün-gelb	vert-jaune
OG	orange	orange	orange
VT	violet	violett	violet

	meaning of symbol	Bedeutung der Zeichen	interprétation
M	motor	Motor	moteur
S	switch	Schalter	interrupteur
C	condenser	Kondensator	condensateur
E	electronic unit	Elektronik Einheit	unité électronique
F	fuse	Sicherung	fusible
RS	reversing switch	Drehrichtungsschalter	commu. droite/gauche
S	centrifugal switch	Fliehkraftschalter	déclencheur centrifuge
OL	overload cut-off	Überlastschuttschalter	déclencheur surcharge
LS	limit switch	Positionsendschalter	micro

230/50/1

